

# Trillium

Real Life Experiences -  
Hydrogen Fueling Infrastructure



A  **Love's** Company

# Love's Travel Stop



## Trillium is Backed by the Love's Family of Companies

- ❑ Founded 1964, headquartered in Oklahoma City
- ❑ 502 travel stops in 41 states
- ❑ 24-hour access to fuel, restaurant offerings, convenience store products
- ❑ Network of hotels, truck care and storage locations



50+  
YEARS

of heavy-duty vehicle  
fueling experience

23,000 +  
EMPLOYEES

committed to excellent  
customer service

765+  
VEHICLES

owned and operated (through  
Gemini Motor Transport)

# Trillium: Alternative Fueling Solutions Provider



## NEW TO ALTERNATIVE FUELS? WE CAN HELP.

25 +

YEARS

of fleet fueling  
experience

200 +

FACILITIES

nationwide dispensing  
clean fuel

100 +

MILLION DGE

of clean fuel  
delivered per year

65 +

PUBLIC-ACCESS

fueling facilities (Trillium &  
Love's)

150 +

EMPLOYEES

growing the clean  
fuel market

100 +

MECHANICS

in-house to perform  
proactive maintenance

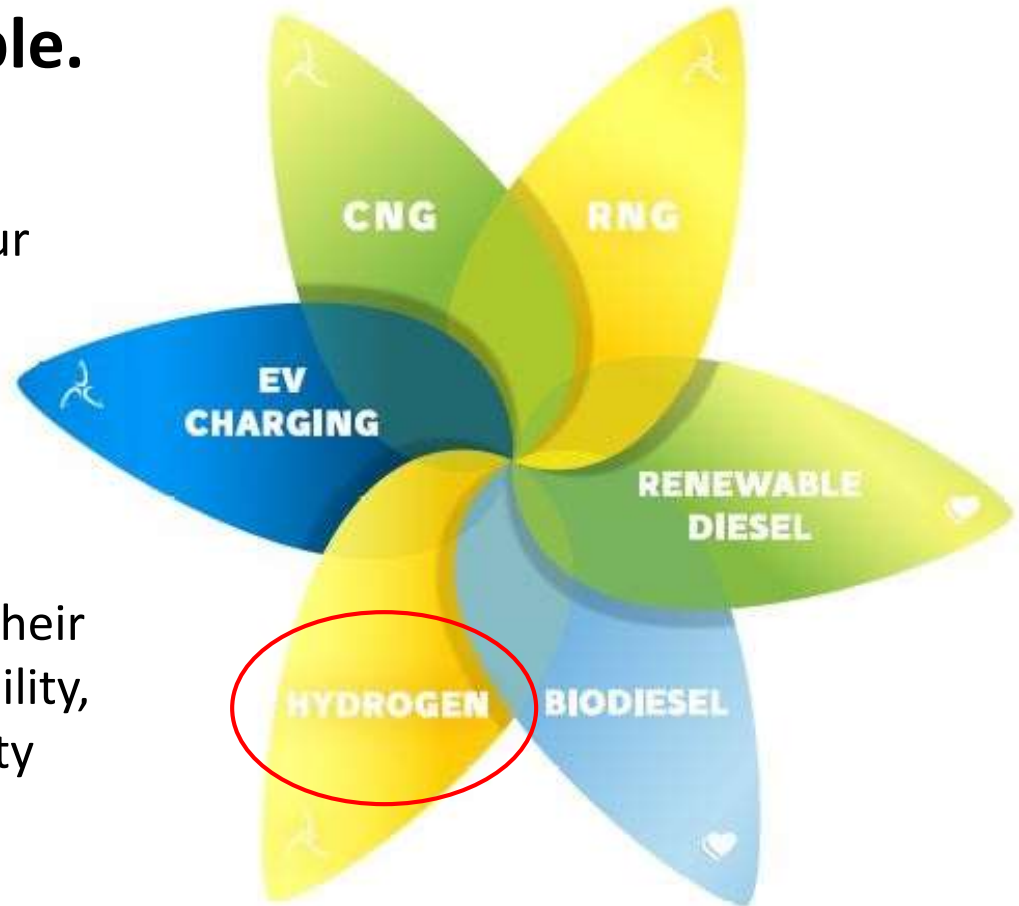
# One Partner, Any Fuel



## It really can be that simple.

Through our Love's Family of Companies, Trillium can supply your station with any clean fuel as your fleet's needs evolve and grow.

Trillium works with customers to identify the clean fuel and power supply sources that work best for their fuel station – balancing cost, reliability, deployment timelines, sustainability goals, location, and scale.



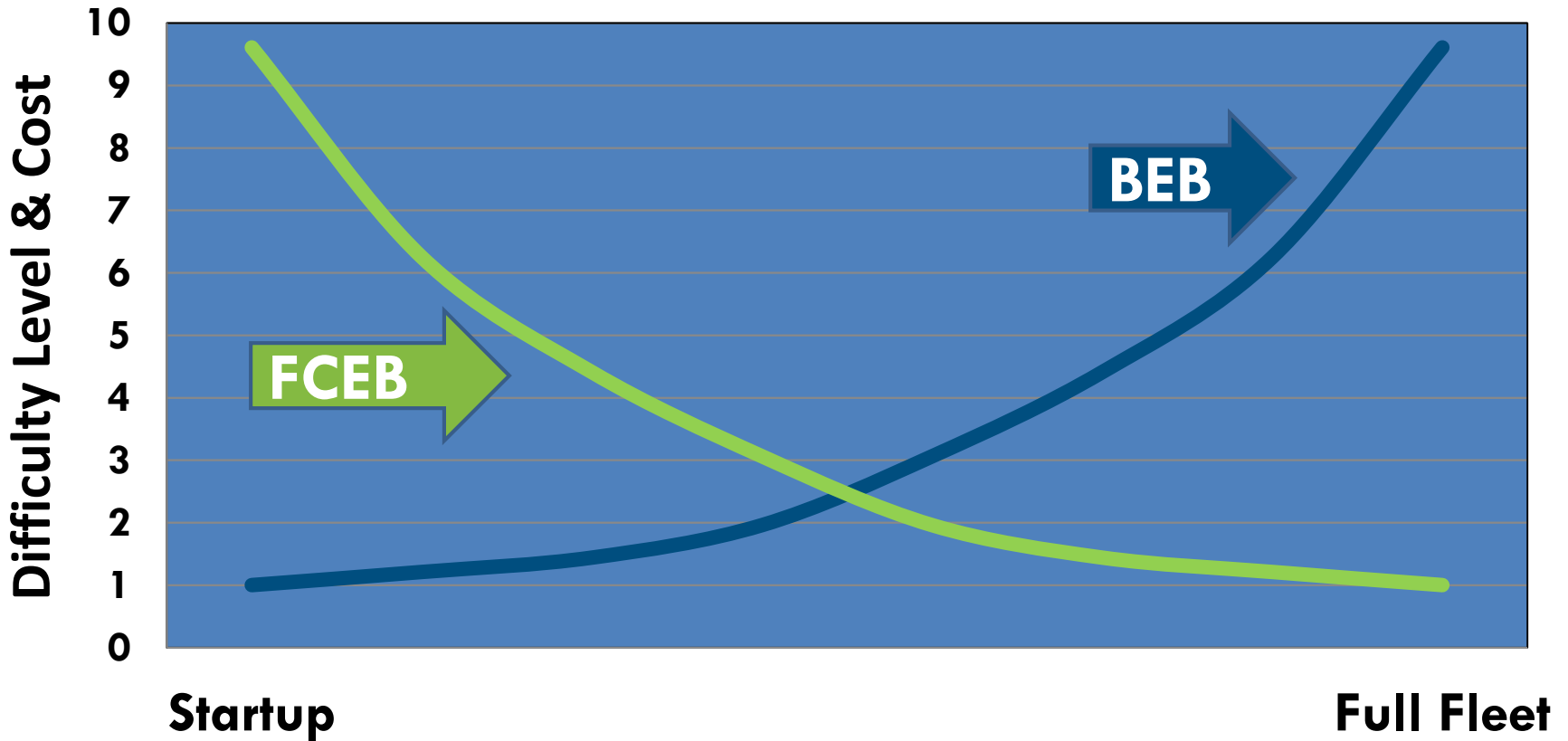
# Customer-Centered Approach to Fueling

Trillium can partner with you at any stage of your station development to help you maximize efficiency, cost savings, and operating performance.

Our 24/7 service model has helped us achieve the highest customer satisfaction in the industry and 99.9% uptime for our stations.



## How to get started with FCEBs?

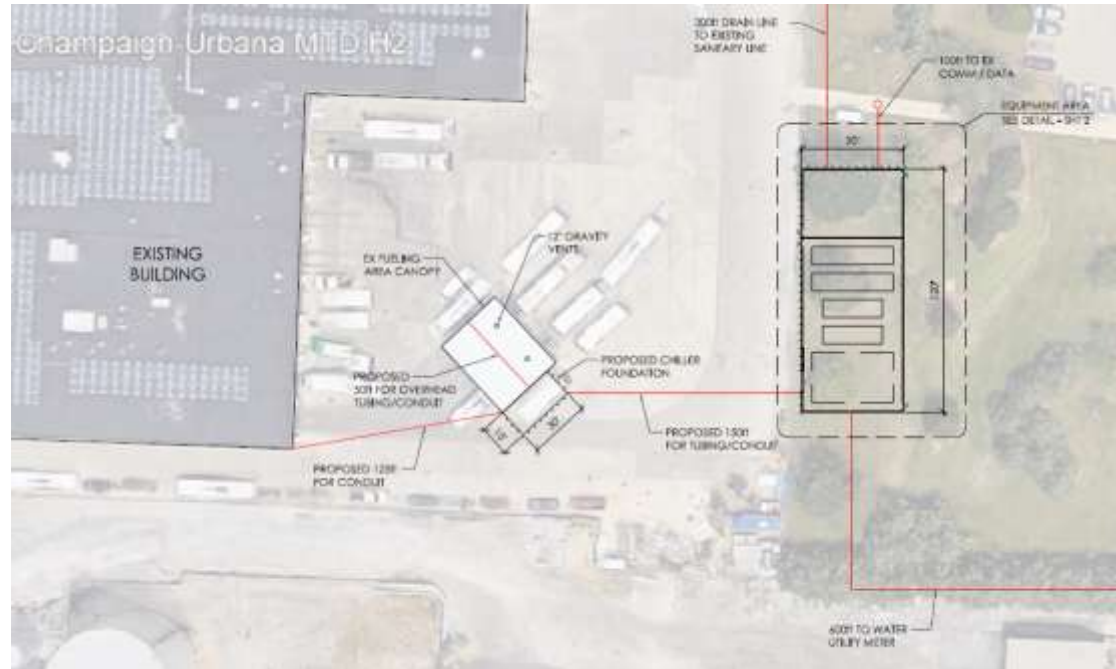


# Orange County Transit – Delivered Liquid H2



- 30 kg per vehicle in 6+ minutes
- From 2 dispensers simultaneously
- Up to 1,500 kg/day
- 3 days of storage
- Footprint: 3,500 sq. ft.

# Champaign Urbana MTD – Onsite H2 Production



- Produces 450 kg per day via Electrolysis
- 1 MW electrolysis system
- Flowrate : 3.6 kg / min
- Power: 2.2 kw/kg , 500 kwh/kg
- Water Usage : 3 gallons per kg
- Footprint: 6,000 sq. ft.



# Thank You



## **Kim Okafor**

Manager, Zero Emission Solutions

Office: 713-332-5706

Email: [Kimberly.Okafor@Loves.com](mailto:Kimberly.Okafor@Loves.com)



1-800-920-1166  
[loves.com/trillium](https://loves.com/trillium)

A  **Loves Company**